



Elwyn
Est. 1852

DONOR IMPACT REPORT

2019-2020

**WE ARE
ALL IN THIS
TOGETHER**





Letter from Vice President of Advancement

DEAR FRIENDS,

Much has changed in the world since our last Donor Impact Report. Schools closed, some businesses remain shuttered, and many of us know people who don't know when they will receive their next paycheck. Unfortunately, nobody can say for sure when our lives will ever return to what we used to consider normal.



While things constantly evolve in the midst of this pandemic response, the needs of our community's most vulnerable individuals and families continue. The essential nature of our work remains, as we continue to provide services around the clock to the individuals we support. Our staff has been creative, resourceful, and cautiously fearless in the face of this crisis to ensure everyone's health and safety.

Thank you for standing with us in these critical times. Your support has been invaluable in our efforts to adjust and adapt to these unprecedented circumstances. You're helping to ensure the most vulnerable among us are not forgotten.

On the following pages, we highlight the impact of several donors and acknowledge the many donors who have contributed to Elwyn during the past fiscal year. We are so grateful for the important role that you play in our ability to further advance our mission. Collectively and collaboratively, we are working to build a Forever Elwyn.

Most sincerely,

Marguerite O. Kraftson, CFRE
Vice President of Advancement



Table of Contents

| | |
|--|-------|
| Mission and Values | 4 |
| Fast Facts | 5 |
| Our Reach | 6 |
| Caring During COVID-19 | 7 |
| Philanthropic Request System | 8 |
| Thank You, Donors | 9 |
| Thank You, Heroes | 10 |
| The Opening of Clark's Manor | 12 |
| Events at a Glance | 14 |
| Our Donors | 15-17 |
| Board of Directors | 18 |
| Elwyn Foundation Board of Advisors | 18 |
| Four Things We All Must Do To Keep COVID-19 Away | 19 |



Mission

Through personal commitment, collective talent, and innovation, Elwyn supports individuals with diverse challenges in shaping distinctive, meaningful lives. We will create an enduring mission to enrich the quality of life for individuals in our care.



Values

1 **Integrity**
We keep our promises, always.

2 **High Expectations**
We provide extraordinary services, equaling the standard we expect for our own loved ones.

3 **Safety**
We are courageous on behalf of our members.

4 **Accountability**
We align our efforts to produce extraordinary results.

5 **Sustainability**
Elwyn's mission is essential to the world.



1852

**FOUNDED IN
PHILADELPHIA**

THE LARGEST

**IN MEDIA, WE OPERATE
THE LARGEST STATE
APPROVED PRIVATE
SCHOOL IN PENNSYLVANIA.**

**SUPPORT FOR
COEXISTING
NEEDS**

**A DIAGNOSIS THAT INCLUDES
BOTH AN INTELLECTUAL/
DEVELOPMENTAL DISABILITY AND
BEHAVIORAL HEALTH NEEDS CAN
OVERWHELM MOST PROVIDERS.
NOT US. ELWYN EXPANDS OUR
CARE TO FIT THE NEEDS.**

**PROUD
TO BE AN
EXCLUSIVE
PROVIDER.**

**ELWYN PROVIDES
PRESCHOOL EARLY
INTERVENTION SERVICES
TO ALL CHILDREN
3-5 YEARS OLD IN
PHILADELPHIA WHO HAVE
AUTISM AND OTHER
DIFFERING ABILITIES.**

**20,000+ INDIVIDUALS SERVED
ANNUALLY**

Our Reach

West Coast



East Coast



Caring During COVID

As an industry leader, Elwyn has always prioritized care and support for the most vulnerable. The emergence of COVID-19 proved to be no exception. The challenges of the crisis gave us opportunity to further demonstrate our conviction and dedication to the individuals in our care, their families, and our exceptional staff. Protecting and supporting these three constituent groups, known as Elwyn's Service Triangle, remain of greatest importance.

Communication is Key

We realize how important it is to stay connected, especially during a crisis. That's why we created a special [webpage](#) to facilitate the distribution of information; one centralized location with easy access to important messages, highlights from the CDC and other external resources, and video messages from our CEO.

An Emergency Fund is Created

The COVID-19 Emergency Fund was developed to help provide immediate and continued assistance with critical supplies such as personal protective equipment (PPE) and sanitization stations. Designed to raise significant philanthropic dollars, the goal of this fund is to ensure our vulnerable population does not suffer from the current crisis.

In just a few short months, we spent nearly \$3 million dollars in PPE alone, an expense that was both unexpected and unfunded, in response to this pandemic and in order to keep our individuals and staff safe. This does not include many other similar unbudgeted costs such as the deployment of laptops to our behavioral health providers for the provision of remote telehealth services and the overtime and premium pay related to the care for quarantined individuals.



Elwyn Receives Unprecedented Gift

At this unprecedented time in Elwyn's history, we are grateful to have received a \$1,125,000 gift for our COVID-19 Emergency Fund from the Addison Hines Charitable Trust.

Mr. Hines, who passed away in 2003, was born in Chester where he became a successful real estate investor, a major importer of photography equipment, and an owner of a chain of photography stores. His connection to Elwyn ran deep, and his altruistic spirit lives on today.

"The generosity of the Addison Hines Charitable Trust during this crisis is lifesaving," said Charles McLister, Elwyn President and CEO. "We are honored to have these critical resources to safeguard the thousands of vulnerable individuals Elwyn supports and our self-sacrificing staff who care for them."

The Crisis Continues

As the crisis continues, so do our efforts. The need to keep the Elwyn community healthy and safe remains at an all-time high. We continue to monitor the progression of the coronavirus pandemic and are taking the necessary steps and precautions to prevent and contain the spread of disease. We keep the health and safety of the entire community at the forefront of our decision-making; our actions to date and in the future are informed by guidance from the Centers for Disease Control (CDC) and with the most susceptible populations in mind.

Philanthropic Request System



The Philanthropic Request System was launched to provide programs throughout Elwyn with additional resources to enhance their programs. This streamlined system encourages program leaders to utilize available funds for an assortment of projects such as vegetable gardens, social skills building groups, and holiday season gifts. Through the generous support of our Little Bit Extra Fund, Elwyn is able to provide additional services and enrichments that are above and beyond what is typically offered. All of the proceeds raised by our annual Elwyn Day celebration also benefit the Philanthropic Request System.

Many residents of Elwyn enjoy spending time outdoors during the warmer seasons. The Little Bit Extra Fund provides our group homes with resources to improve their outdoor settings. One of the many projects is establishing vegetable gardens. Starting and maintaining a vegetable garden may seem like a simple project, but it provides a wealth of enjoyment to our residents. They are excited to transform tiny seedlings into thriving gardens filled with an abundance of vegetables. The temperate weather is also a great excuse to spend additional time outdoors. Through the Philanthropic Request System, group homes have also been able to purchase quality outdoor dining sets and grills. As we are all spending more time at home, these enhancements provide our residents with safe and socially distanced activities.

Over the past year, many exciting programs have been implemented with resources from the Philanthropic Request System including a new social skills building group. The program, geared toward children with autism, offers an opportunity to increase their social skills and improve communication abilities. Each week, the Children's Behavioral Health

Services Team hosts a Dungeons and Dragons game session. The game encourages players to express themselves through role-play, dialogue, and cause and effect thinking. Group members are asked to incorporate their own life experiences into the sessions. They process and look for solutions not only to imagined problems, but also to real problems that affect the players in their daily lives.

One of our Elwyn parents shared how her son has cherished the new program: "To hear his enthusiasm when he tells me what happened each week lets me know that he is getting much more out of his time there than just playing a game. He is developing relationships with peers and honing his ability to think creatively and strategically to solve problems."

During the holiday season, a joyful initiative known as Elwyn Elves helps to bring a little extra cheer to the residents of Elwyn. This project, supported through the Little Bit Extra Fund, is a longstanding tradition within the organization. Elwyn Elves offers residential programs the ability to purchase presents that are personally selected for each resident. It may be difficult to imagine, but some of the only family our Elwyn residents have are their devoted caretakers. Elwyn Elves ensures that everyone has the opportunity to celebrate the winter holidays.



Thank You, Donors

Your generosity and support helped us weather the immediate challenges of the pandemic, allowing us to provide uninterrupted care to the most vulnerable.

We are truly grateful for your confidence and commitment, strengthening our ability to advance our mission during this unprecedented health crisis. As we focus on the individuals in our care, please know we appreciate you. Thank you for your continued help.

COVID-19 By the Numbers

PERSONAL PROTECTIVE EQUIPMENT (PPE) DISTRIBUTED



**MORE THAN
300,000 3 PLY
SURGICAL
FACEMASKS**



**MORE THAN
500 GALLONS
OF HAND
SANITIZER**

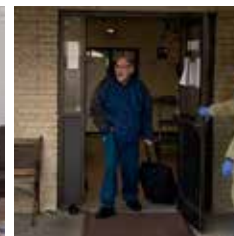
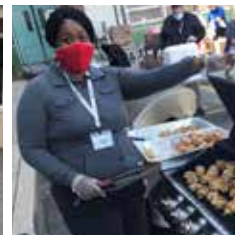
**MORE THAN 4,000
BOXES OF GLOVES**

**MORE THAN 1,600
FACE SHIELDS**

**MORE THAN
100,000 GOWNS**

**NEARLY
15,000
N95
FACEMASKS**

Thank You, Heroes



A man wearing a face mask and glasses, holding a sign that says "THANK YOU TO OUR HEROES". He is wearing a dark t-shirt with "JOIN OUR TEAM!" printed on it. The background is a blurred outdoor setting with trees and a building.

WE ARE ELWYN STRONG

Our incredible staff continue to work round the clock to protect the health and safety of the Elwyn community.

Their dedication and compassion are exemplary beyond measure. In the face of a national pandemic riddled with anxiety and fear, our team continues to provide unwavering care and support to a vulnerable population of individuals with a multitude of medical conditions and behavioral challenges. The peace of mind given to the families of these individuals when it is needed most is truly priceless.

Heartfelt gratitude is also extended to our housekeeping, maintenance, mailroom, switchboard, and food service teams. Without all of these essential team members, Elwyn would not be able to operate 24 hours a day, 7 days a week, 365 days a year.



Opening Clark's Manor: Home is where the heart is

Charles (Chuck) and Barbara Widger have a legacy of giving of their time and talent. Deeply rooted in the community, they are known for their historical and transformational philanthropic efforts. However, Clark's Manor, named for their son, may be their most meaningful and significant project yet. The Widgers have partnered with Elwyn to open a premier, innovative, home-like family setting for adults with chronic mental illness who are stable and invested in their treatment.

"We have been developing Clark's Manor for some time in order to bring Clark home and to benefit other people with chronic mental illness. We understand that families want to know their adult children are safe and will have support during their lifetime. Clark's Manor will be the first of its kind in the tristate area. Based on a successful 40-year old program in Boston, this supportive and therapeutic milieu program operates on the philosophy that home is a safe haven. All residents will be protected and secure, while receiving exceptional care."

"We have a significant commitment to Clark's Manor. We are a family focused on outcomes. Our long-term goal is to help adults like Clark live positive lives as constructive members of this community."

Barbara Widger

At Elwyn, we believe that individuals have the greatest chance to realize their potential when given the necessary supports. Clark's Manor is a private, contemporary, and nurturing program, designed as a therapeutic home setting for eight residents to receive collaborative behavioral and mental health milieu supports.

"We know the milieu model will benefit others and their families."

Chuck Widger

Clark's Manor is set back in a tranquil, tree-lined suburban Philadelphia neighborhood. The property will feature many amenities, as well as immaculately maintained grounds with beautiful trees, shrubbery, and flowers.





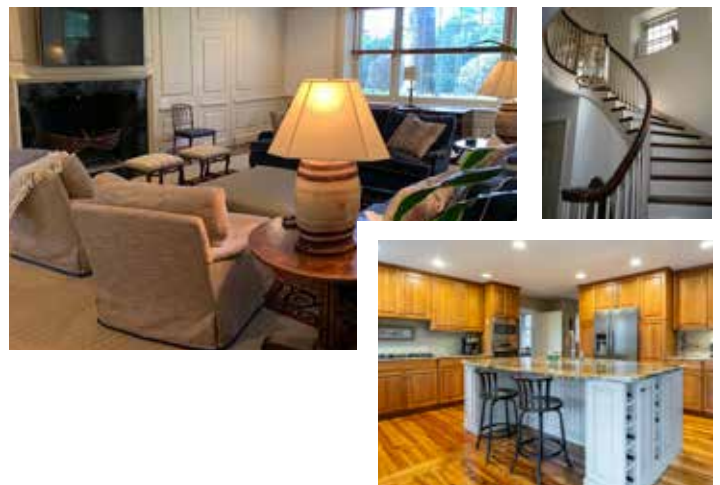
The Widgers know the impact of this investment is more than financial. Ensuring their son will receive support in perpetuity provides a peace of mind for them, as well as other families in need.

“We are highly confident that through Elwyn’s professional capabilities as a Behavioral Mental Health Partner, Clark’s Manor will become a positive force in the lives of its’ residents, and the community.”

Charles Widger

“Chuck and Barbara exemplify and embody Elwyn’s core values. We are exceptionally grateful for their generous commitment to Elwyn, to the community, and to improving outcomes for adults with chronic mental illness.”

Charles McLister,
President and CEO, Elwyn



About Charles Widger: Chuck Widger is a partner in East Bay Merchant Partners, a family investment firm. He was the founder and Executive Chairman of Brinker Capital Investments which is now a division of Orion. He is a former chairman of the Board of Trustees of Gettysburg College and the Villanova University Charles Widger School of Law Board of Consultants. He has been recognized by EY as Greater Philadelphia’s Entrepreneur of the Year in the financial services category. Chuck is a graduate of Gettysburg College, Villanova University Charles Widger School of Law and holds an L.L.M. in taxation from Boston University’s School of Law. He also served as a Lieutenant in the United States Navy.

Events at a Glance

40th Annual Elwyn Ball Recap

Principal Sponsor: Doyle Alliance Group



Together, with sponsors and guests, we celebrated the 40th Annual Elwyn Ball virtually on Saturday, May 16, 2020.

We are tremendously grateful to our 40th Annual Elwyn Ball Sponsors who continued to support Elwyn in spite of the the coronavirus pandemic. Through the generosity of our loyal sponsors, the Ball has raised \$5.2 million over the past ten years. If you have not had the chance to watch our program, you can [view it here](#).



Elwyn Day

An event for the individuals we serve with the individuals we serve!

We resurrected and reimagined Elwyn Day - a historic event on the Elwyn campus - on Saturday October 19, 2019 to include everyone in the Elwyn Community! The event included carnival games, arts and crafts, fall festivities, and a .5 mile wheelchair friendly walk around campus.



Our Donors

We gratefully acknowledge the generous supporters who made a contribution between July 1, 2019 and June 30, 2020. While all donations are greatly appreciated, donors of \$1,000 or more are listed on these pages due to space limitations. Please note that every effort was made to ensure accuracy. We apologize for any inadvertent errors or omissions.

\$100,000 and up

Helen and Dick Leaman

\$50,000 to \$99,999

Estate of Arlene Boles
Doyle Alliance Group
Harriet M. Fratarollo Irrevocable Trust
Gayle D. McCue Family Trust
Mill Creek Capital Advisors
PHL COVID-19 FUND
Staffing Plus
Bill and Judy Strine

\$25,000 to \$49,999

Aetna
Brown & Brown Consulting
The Foundation for Delaware County
The Graham Company
Bonnie and Joe Lundy
Charles and Elizabeth McLister
The Martha G. Moore Foundation, Inc.
Silicon Valley Community Foundation

\$10,000 to \$24,999

ADP
Kelsey and Sue Brown
General Healthcare Resources
The Gindes Dynasty Trust
Goldman Sachs
Sherry Harshaw
Chris and Marsha Kellogg
Audrey S. Knewstub Foundation
Marguerite Kraftson
Susan Lawrence
Nerney Family Foundation
NRG Energy
Office Basics
Quality Care Options
Rite Aid Foundation KidCents
Martha W. Rogers Charitable Trust
Ronald and Jennifer Ruschman
Andrea Anania Stewart
Sun East Federal Credit Union
The Reinvestment Fund
Vanguard Charitable
Donna Witzleben

Our Donors

\$5,000 to \$9,999

Mary C. Atcheson Endowment
Virginia and Caesar Crognale
Chimicles Schwartz Kriner and
Donaldson-Smith LLP
Chorus Communications
Eagles Autism Foundation
The Earthman Foundation
HB Electric Service, Inc.
Tina and Paul Hwang
Raymond and Dorothea Klapinsky
Paul Martino
The Marvin Family Foundation
Harry Mazurek and Susan C. Shilcrat
Estate of William McIlvaine
The Mutual Fire Foundation, Inc.
Perspective Financial Group, an
Alera Group Company
PMA Management Corp.
ProCo Insurance Services
R.C. Titter Construction, Inc.
Razor Technology
Jim and Amanda Sebra
JoAnn Sheridan-Storm
Linda and Steve Siegfried &
Neetsie and Barry Siegfried
Robert and Kelly Silliman
Lisa and Alex Spector
Temple University School of Medicine
Frank Trexler Charitable Trust
William Vaux, Jr. Trust
Alvin and Helen Vinitsky
Alan and Laura Wechsler
Wm. Henderson Plumbing Heating & Cooling

\$1,000 to \$4,999

Autism Society of America Lehigh Valley Chapter
Bank of America Charitable Foundation
Jim Bedrossian
Cindy Bertrando and Bob Williams
Binswanger Companies
Christopher and Johanna Borden
Bottino's Supermarkets
Brookside Contracting
Charles Brown
Dennis and Eleanor Bush
Century 21 Preferred R.E.
Chalmers and Kubeck, Inc.
Cigna Healthcare
Bonnie Clear
Charles and Mari Connolly
The Cozen O'Connor Foundation
Denney Electric Supply
Lee and Diane Doyer
Easton Coach Company
Eleanor B. Acker Fund of the Community
Foundation of New Jersey
Mike and Joan Emmi
Exelon Generation
Karen Fleming
Fox Rothschild LLP
Crista Gessler
Enrico Giancroce
GMH Associates
Ernest Gore
Ed and Ellen Goss
Jim and Judy Govatos
William H. Hahn Trust
Larry and Bonnie Harshaw
Hazard Family Trust
John and Elizabeth Herron
Gary and Patricia Holloway
Home for Orphans of Odd Fellows of PA
Iron Workers Bank
J and A Refrigeration
Johnson and Johnson

Our Donors

Len Kirby
Bradley Kolb
J. Michael and Catherine Kunsch
Catherine and Jerrold Lakoff
Sylvia Landis
Pierre and Susan LaPerriere
Lincoln Financial Group
Lyondell Basell
Regina MacKenzie and Dennis Senackerib
Robert and Kim MacPherson
Main Line Health
Main Line Health Medical Staff
Dom and Sherry Marfisi
Marshall, Dennehey, Warner, Coleman and Goggin
Bill and Monica Mason
Kenneth Maxwell
Jane and Tom McCaully
Gregory McKiernan and Valerie Mita-McKiernan
David McNamara
Kurt and Kaitlin Miceli
Pen-Ming Ming
Monroe Energy, LLC
Jeff and Marie Morton
Marvin and Ann Morton
Eric and Georganne Moyer
MTM Financial Group
Estate of Peter C. Nowell
Nyman Associates
Oakview Associates LLC
Oasis Property Group
The O'Donnell Family Foundation
Timothy and Sue O'Reilly
Tim and Deborah O'Rourke
Pareto Captive Services, LLC
Debra Paul
PharMerica
Francis Pietrini
George and Lee Prier Trusts
Martin Raffel
Trudie Ramsey
Ray and Meryl Raskin
RCT Property Group, LLC
Leeor Sabbah
Zmira Sabbah
Stephen and Rhoda Sand
Richard and Dulce Schmidt
Brad Shusman
Paul Sierer
Steven Silber and Sonja Pettingill
Robert and Eileen Simons
Trudy and Laird Slade
Vince Sosa
South Bay Toyota
Christine Stewart
Kyle Stiffler and Alex Zwill
Stillwater Capital Advisors
Peter Sturrock
Team Toyota of Glen Mills
The Tolan Group
Travelers
George and Jackie Tucker
United Way of Delaware
United Way of Greater Philadelphia and
Southern New Jersey
Margaret Vanhorn
Sophia Velastegui
Vineland Construction Company
Naomi Weckerly
Alan and Janice Wichlei
William E. Howe and Company
Wills Eye Hospital
Donna Witzleben
Vanguard



Elwyn Foundation Board of Directors

Joseph E. Lundy, Esq., Chair
Andrea Anania, Vice Chair
Steven Silber, M.D., Secretary
James J. Sebra, Treasurer
Christopher Borden
William Emmet
Frank Farley, Ph.D.
Ellen M. Goss, M.H.A.
Christopher Kellogg

Catherine Kunsch, Ph.D.
Pierre La Perriere
Thomas McCaully
Charles S. McLister
Timothy C. O'Rourke
Adam Saunders
Trudy Slade
Alan Wechsler
Alan Wichlei



Elwyn Foundation Board of Advisors

Adam Saunders, Chair
Trudy Slade, Vice Chair
J. R. Burke
Rob Cola
Jared G. Culotta
Joan Emmi

Edward Goss
J. Richard Leaman, Jr.
Dave Logan
Joseph E. Lundy, Esq.
Bill Mason
Thomas McCaully

Charles S. McLister
Justin O'Malley
Lisa Spector
Judy Strine
Alan Wechsler

Four Things We All Must Do To Keep COVID-19 Away



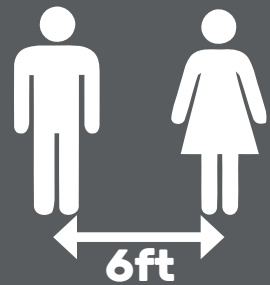
Mask Up!

Please wear a face mask covering your mouth and nose.



Wash Hands and Disinfect

Wash your hands and disinfect high-touch surfaces daily.



Social Distancing

Maintain social distancing of 6 feet (or more)!



Screen for Symptoms

Monitor for signs and symptoms of COVID-19; stay home if you are ill.



Transforming care, together.

Since 1852, Elwyn has helped people with autism, intellectual, developmental, and behavioral challenges lead meaningful lives. As an internationally recognized nonprofit human services organization, we have always been on the forefront of innovation. To learn more, visit elwyn.org.

 111 Elwyn Road
Elwyn, PA 19063

 610-891-2000

 www.elwyn.org

